

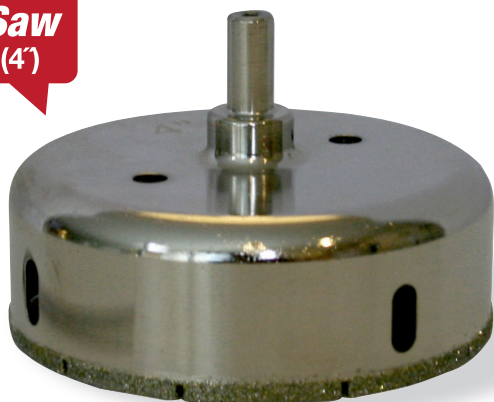
# DIAMOND HOLE SAWS

## FOR DRILLING HARD MATERIALS- PORCELAIN, GRANITE & STONE

### FEATURES:

- High diamond concentration
- Electroplated steel construction
- Precision cuts in corners & near tile edges

**Hole Saw**  
DHS4 (4")



**Hole Saw**  
DHS14 (1/4")



**Hole Saw**  
DHS138 (1-3/8")



▲ For use with most types of hand-held/cordless drills (800-2500 RPM)

NO.	SIZE/DESCRIPTION	
DHS18	574652	1/8" Wet Cut Hole Saw (w/out push pin)
DHS316	574659	3/16" Wet Cut Hole Saw (w/out push pin)
DHS14	574651	1/4" Wet Cut Hole Saw (w/out push pin)
DHS38	574661	3/8" Wet Cut Hole Saw (w/out push pin)
DHS12	574648	1/2" Wet Cut Hole Saw (w/out push pin)
DHS516	502813	5/16" Wet Cut Hole Saw (w/out push pin)
DHS34	574660	3/4" Wet Cut Hole Saw (with push pin)
DHS1	574645	1" Wet Cut Hole Saw (with push pin)
DHS114	574647	1-1/4" Wet Cut Hole Saw (with push pin)
DHS138	574650	1-3/8" Wet Cut Hole Saw (with push pin)
DHS112	574646	1-1/2" Wet Cut Hole Saw (with push pin)
DHS134	574649	1-3/4" Wet Cut Hole Saw (with push pin)
DHS2	574653	2" Wet Cut Hole Saw (with push pin)
DHS214	574655	2-1/4" Wet Cut Hole Saw (with push pin)
DHS212	574654	2-1/2" Wet Cut Hole Saw (with push pin)
DHS234	574656	2-3/4" Wet Cut Hole Saw (with push pin)
DHS3	574657	3" Wet Cut Hole Saw (with push pin)
DHS312	574658	3-1/2" Wet Cut Hole Saw (with push pin)
DHS4	574662	4" Wet Cut Hole Saw (with push pin)
DHS414	574664	4-1/4" Wet Cut Hole Saw (with push pin)
DHS438	574665	4-3/8" Wet Cut Hole Saw (with push pin)
DHS412	574663	4-1/2" Wet Cut Hole Saw (with push pin)
DHS5	574666	5" Wet Cut Hole Saw (with push pin)
DHS6	574667	6" Wet Cut Hole Saw (with push pin)

### MILLING BITS

MB38	574668	3/8" Milling Bit
MB34	574669	3/4" Milling Bit

### COUNTERSINK BITS

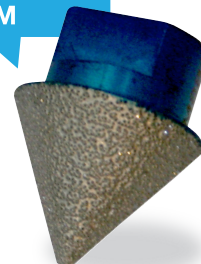
CSSM	574670	3/16-1-3/8" Diamond Countersink Bit - For Profiling Holes 1-5/16 - 2-1/2"
CSLG	574671	3/4-1-7/8" Diamond Countersink Bit - For Profiling Holes 1-3/8 - 3"
CSXL	501106	1-3/8-3" Diamond Countersink Bit - For Profiling Holes 2-1/2 - 4-1/8"

**ALL ITEMS  
PACKAGED  
1/CASE**

**Milling Bit**  
MB38



**Countersink Bit**  
CSSM



No. CORE-5811  
5/8-11" Countersink & Milling Bit Shank Adapter  
For use with standard drill. Not necessary for use with grinder.

Hole Saws available in various sizes from 1/8" to 6"  
Push Pin Included (Sizes 3/4" thru 6")

